

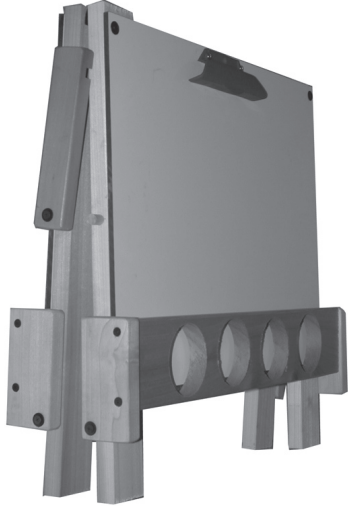
U-9750 Mini-Fascination Station

SET-UP INSTRUCTIONS

This kid's easel is equipped with a spacious dry-erase surface on one side and a large chalkboard surface on the other side. It can be used on a table or on the floor. The side with the dry-erase surface has four non-spill paint cups and a handy clip that holds paper. The side with the chalkboard has a material tray for supplies. The easel folds flat for storage or to transport. This product is made in the USA

STEP 1.

Open carton and remove easel. Set on floor or table. See photo at right.



STEP 2.

Pull-out each side to extend. See photo at right.



STEP 3.

Swing Wooden hinge downward towards wooden dowel. See photo at right.



STEP 4.

Secure wooden hinge by placing notched slot over wooden dowel and push down firmly to secure. See photo at right.



STEP 5.

Snap on a spill-proof lid to all [4] cups and cap to assemble a spill proof cup. See photo at below



STEP 5.

Place assembled cups into holes on wooden tray. Easel should look like photo at right.



Martin/F. Weber Co. • 4444 Lawton Avenue, Detroit, MI 48208 USA
Tel: (313) 895-0700 • Fax: (313) 895-0709 • E-mail: Custservmud@aol.com
www.MartinUniversalDesign.com • www.weberart.com • Made in USA

Created July 06 RPI