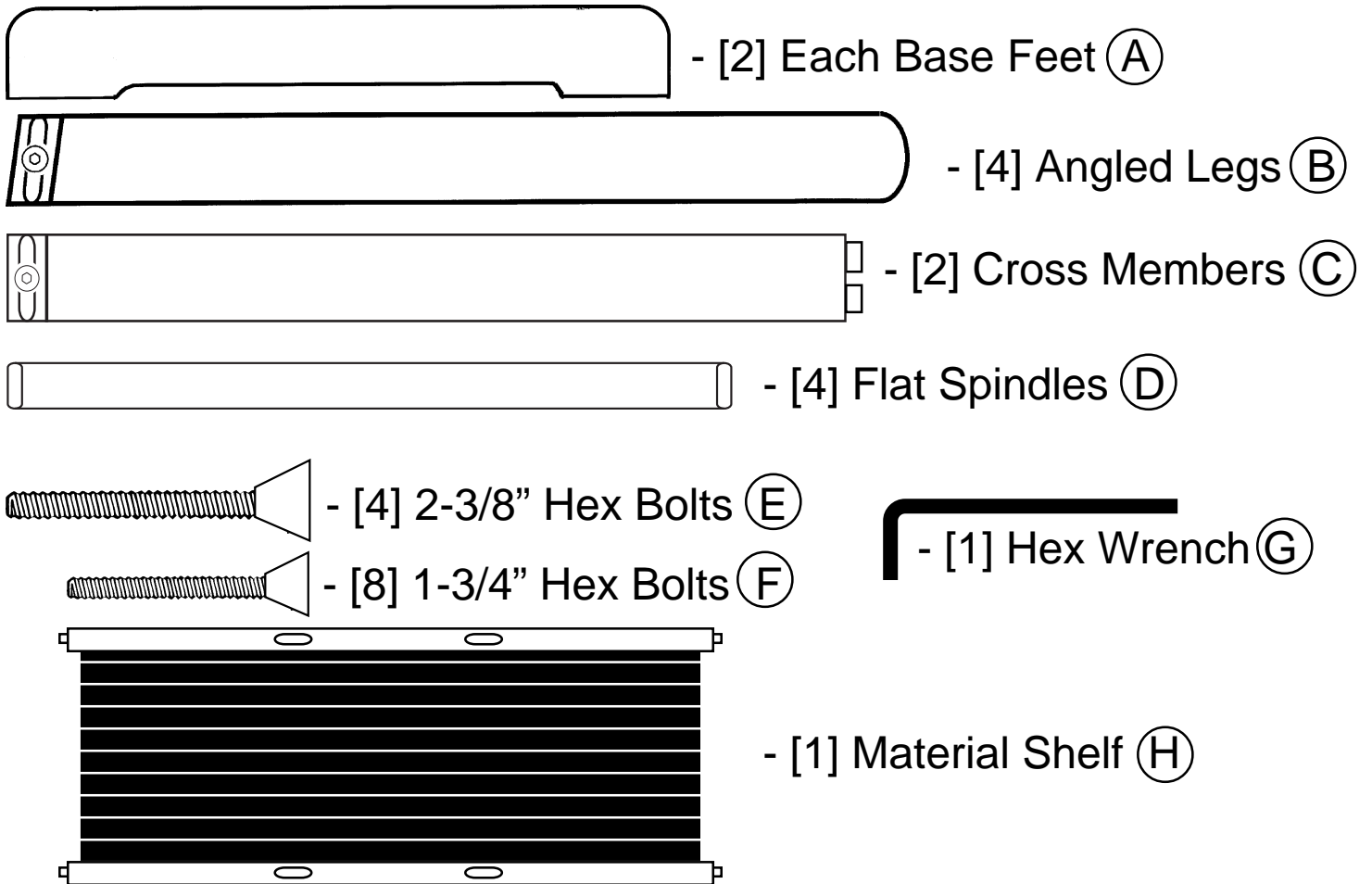


Avanti® Print Rack Assembly Instructions

Carton Contains



Assembly:

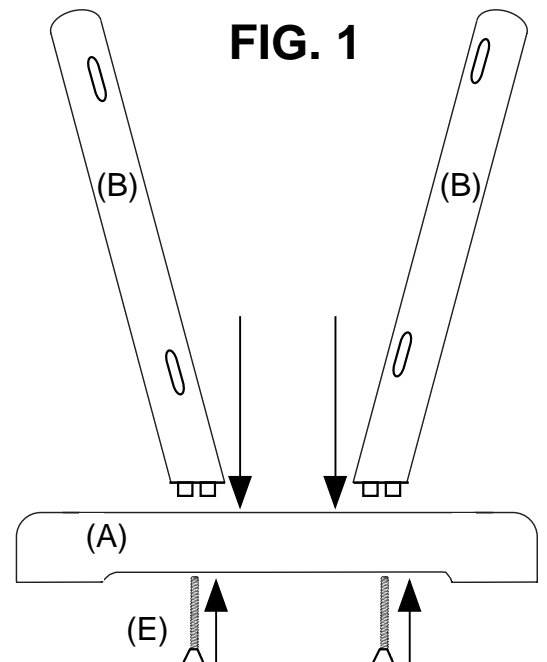
Step 1:

Empty contents of carton. Make sure all parts listed above are included. If you are missing any part, please call our Customer Service Dept at: (313)895-0700.

Step2:

Begin by attaching each angled leg (B) to base foot (A). Make sure oval cut-outs are facing inward. Push wood into cutout on base and secure by using [1] 2-3/8" Hex Bolt (E) through bottom of base foot (A). DO NOT Tighten completely. Repeat with remaining 3 Angled Legs (B).

SEE FIG. 1



Martin/F. Weber Co.
4444 Lawton Avenue, Detroit, MI 48208 USA

Assembly continued:

Step 3:

Take the 1 of the leg assemblies and lay it down flat on a flat surface. Making sure the oval slots are facing upward. Attach the Material Shelf (H) by inserting one end of it into the lower slots of the leg assembly. You may need to pound the tray down into the slots by using a rubber mallet. PLEASE NOTE: Legs may need to be slight adjustment to fit. Secure by inserting (2) 1-3/4" Hex Nuts (F) into the opposite side holes. Finger Tighten. **SEE FIG 2.**

Step 4:

Attach other leg assembly by inserting end of material shelf (H) into lower oval slots of leg assembly. Secure by inserting (2) 1-3/4" Hex Nuts into the opposite side holes. Finger Tighten.

Step 5:

Stand rack assembly upright onto its base legs. Insert all 4 flat spindles (D) into their respective slot holes on edge of material shelf. You may have to work the spindle in a back-in-forth motion while applying pressure to get the spindle in the slot hole. This tightness is for durability. **SEE FIG. 3**

Step 6:

Attach (2) Cross Members (C) by inserting one end of cross member into one side of leg assembly, then proceed to move across to the flat spindles (D) and then to the other end of leg assembly. By following this order, the cross member is easier to attach. Make certain logo on Cross Member (C) is on outside edge. Secure by inserting a 1-3/4" Hex Bolt into each end of leg assembly. Tighten. Repeat with other side. **SEE FIG. 4**

Step 7:

Return to all Hex Bolt connections and tighten to secure.

Your Print Rack is now ready for years of use.

